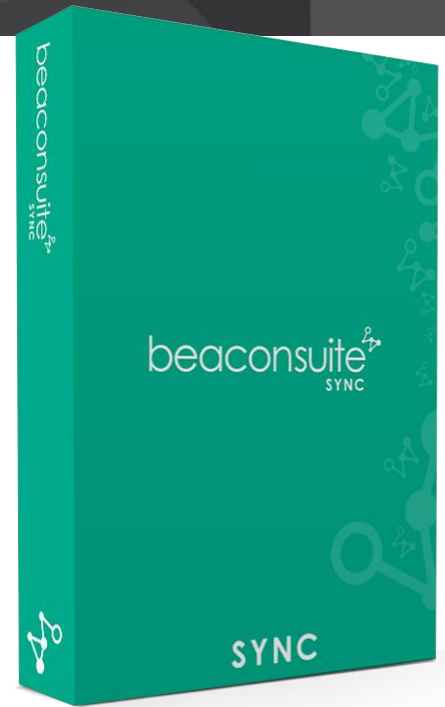


## SMART INTEGRATION ACROSS SYSTEMS; RAPIDLY ASSESS, TRANSFORM, & SYNCHRONIZE DATA

### Trusted Data Saves Schedule & Money

Tear down information silos and build confidence in your data with Beaconsuite™ Sync. Sync saves time and money by efficiently assessing multiple systems data at once and generating load files for synchronization.

Beaconsuite™ Sync significantly reduces work / rework resulting in efficient data / record alignment between different systems. Sync's rule engine enables clients to configure business rules specific to their needs. The built-in data transformation engine transforms data enabling each system to remain independent without the need to normalize. The Beaconsuite™ Sync solution enables companies to align information in a cost-effective manner.



### BENEFITS

Assess and report data discrepancies between different systems



Make informed decisions as to next steps (e.g. import resulting load files or not)



Apply robust repeatable business logic for each analysis which ensures that the appropriate inserts and updates data for the target system



Test prior runs



### FEATURES

Configure business rules that assess and validate data in the source systems or across systems (e.g. SPI to SAP to SPF)



Transform data source across multiple systems to make it comply with the target systems



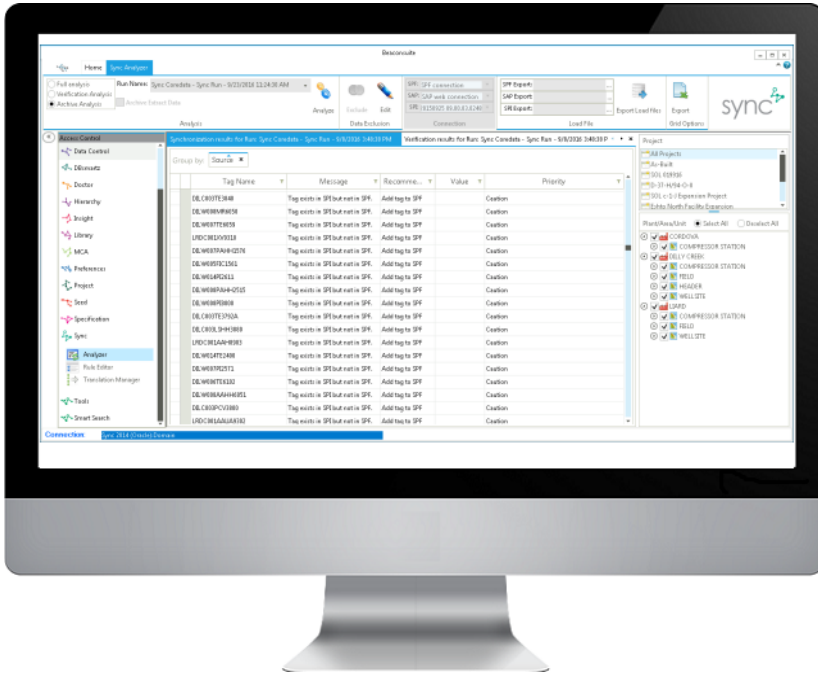
Generate customized load files to accommodate the target system requirements



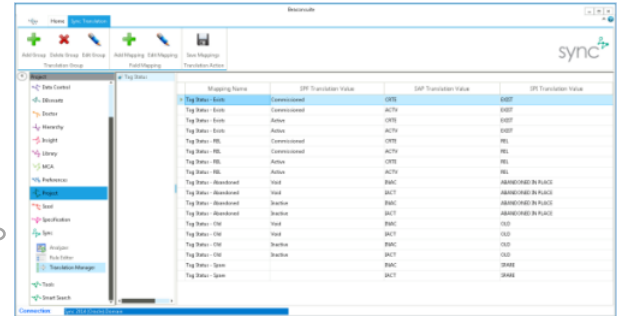
Retain run results within the Beaconsuite Sync database for future use.



Exclude legacy data from future audits to reduce nuisance reporting (exclusions can be reversed)



Analysis and recommendations  
for aligning systems



## TRANSFORMATION RULE CONFIGURATION INTERFACE



## TECHNICAL SPECS

- Desktop deployment and installation via electronic download
- Oracle and MS SQL Server databases
- .Net Framework 4.5 or higher
- Windows 7, 10
- MS Office or MS Excel 2007, 2010
- 4GB of RAM

### Included in your download, you receive:

- Installation manual, including system requirements
- Installation media
- One year license key
- User manuals
- Free setup support
- A comprehensive warranty

### Technical Support:

- Monday to Friday (excluding statutory holidays), 8am – 5pm MST
- Support@cooleycore.com

### For more information or to purchase visit:

- cooleycore.com
- smartstore.cooleycore.com