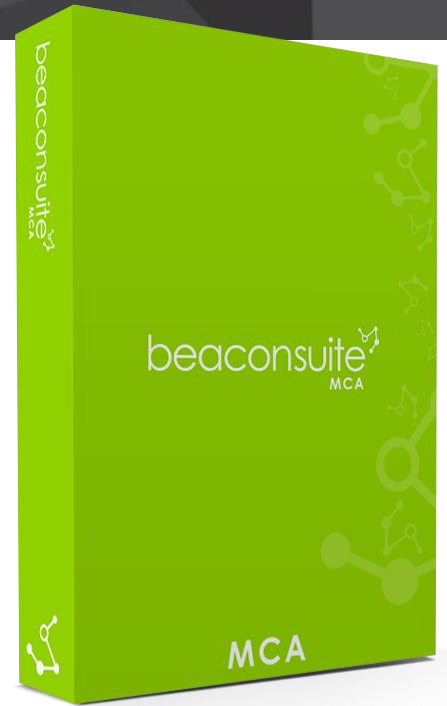


MANAGE AND SIMPLIFY PROJECT CLOSEOUTS

PROTECT PROJECT AND AS-BUILT DATA

Beaconsuite™ MCA (Merge and Claim Analysis) protects your Instrumentation & Controls data in Owner Operator configured SmartPlant Instrumentation® (SPI) databases.

Beaconsuite™ MCA provides essential information along with key recommendations that assist with safely creating and closing out projects. Executing merges and claims with MCA reduces data / deliverables risk.



BENEFITS

Protect your data integrity by tracking high risk project changes



Improve on-site safety by reducing concurrent engineering



Ensure field employees use the latest information



Improve efficiency by closing out low risk projects quickly; greenfield projects can be merged within a few minutes



FEATURES

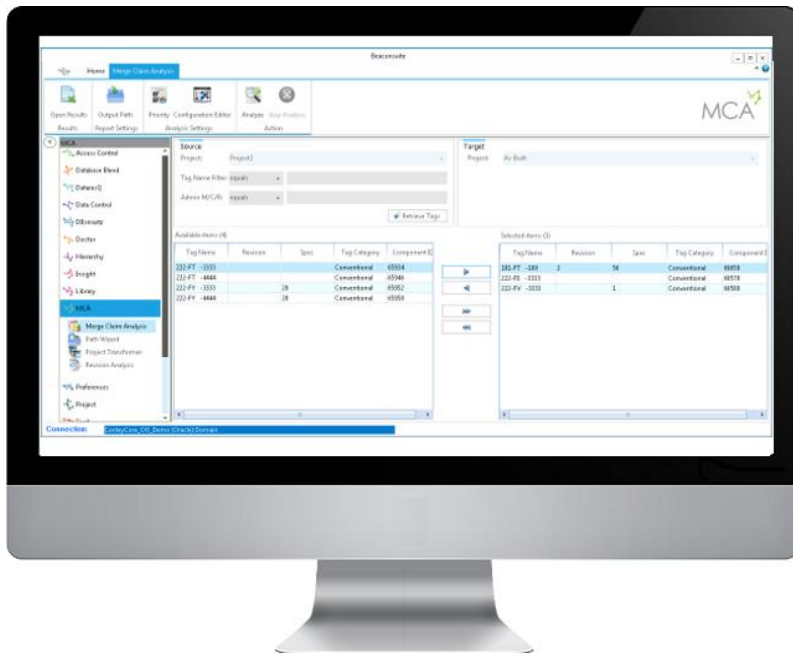
Quantify project close out complexity, including claimed, deleted, concurrent/shared and renamed assets; MCA provides recommendations Flags deliverable revision issues (across source project, As-Built, and concurrent projects)



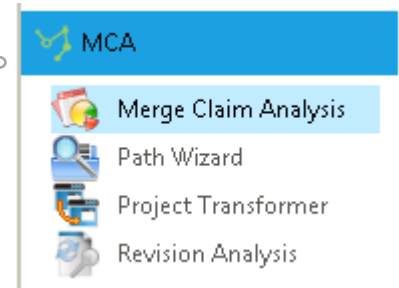
Easy to use functionality to quickly close (merge) projects that have no claimed data



Empowers file paths stored within SPI tables such as archive file paths per project to be updated after merge / project close out



Visually see
source, target and future state information



SUBMODULES PROVIDE A COMPLETE UNDERSTANDING AND EFFICIENT CLOSEOUTS



TECHNICAL SPECS

- Desktop deployment and installation via electronic download
- Oracle and MS SQL Server databases
- .Net Framework 4.5 or higher
- Windows 7, 10
- MS Office or MS Excel 2007, 2010
- 4GB of RAM

Included in your download, you receive:

- Installation manual, including system requirements
- Installation media
- One year license key
- User manuals
- Free setup support
- A comprehensive warranty

Technical Support:

- Monday to Friday (excluding statutory holidays), 8am – 5pm MST
- support@cooleycore.com

For more information or to purchase visit:

- cooleycore.com
- smartstore.cooleycore.com